

EFFECTA

RECOMMENDATIONS

FOR WOOD FRAMED

PELLET STORAGES



TABLE OF CONTENT

1. BESPOKE WOOD FRAME STORAGE WITH FLAT BOTTOM

Page 3: General description

Page 4: Example of model in cut away

Page 5: Switch over of nozzles and inspection glass

Page 6: Placement of suction nozzles.

2. BESPOKE WOOD FRAME STORAGE WITH INCLINE

Page 7: General description

Page 8: Example of model in cut away

Page 9: Switch over of nozzles and inspection glass

Page 10: Placement of suction nozzles.

! IMPORTANT NOTICE

This document is a directional guide. It is not a detailed technical document. We always recommend a discussion with the pellet supplier before building a pellet storage. This document is available for all European markets and there are differences in between the markets in couplings for filling the storage as well as recommendation on dampening mats etc.

1. FLAT BOTTOM WOOD FRAME STORAGE ROOM.

DESCRIPTION OF STORAGE

- Bespoke wood frame storage with a flat bottom.
- Gives maximum volume for pellets on a small footprint.
- Needs more suction intakes since the pellets isn't falling from an incline.
- Recommended frame construction is 145mm x 45mm beams.
- Recommended c/c is 450mm.
- Recommended board materials can be OSB, plywood or hard board.
- A service access placed high preferably close to the filling nozzles. Door opening inwards!
- Discuss appropriate coupling for filling with a pellet supplier in your market.
- A dampening mat is always recommended on the opposed filling side of the storage.



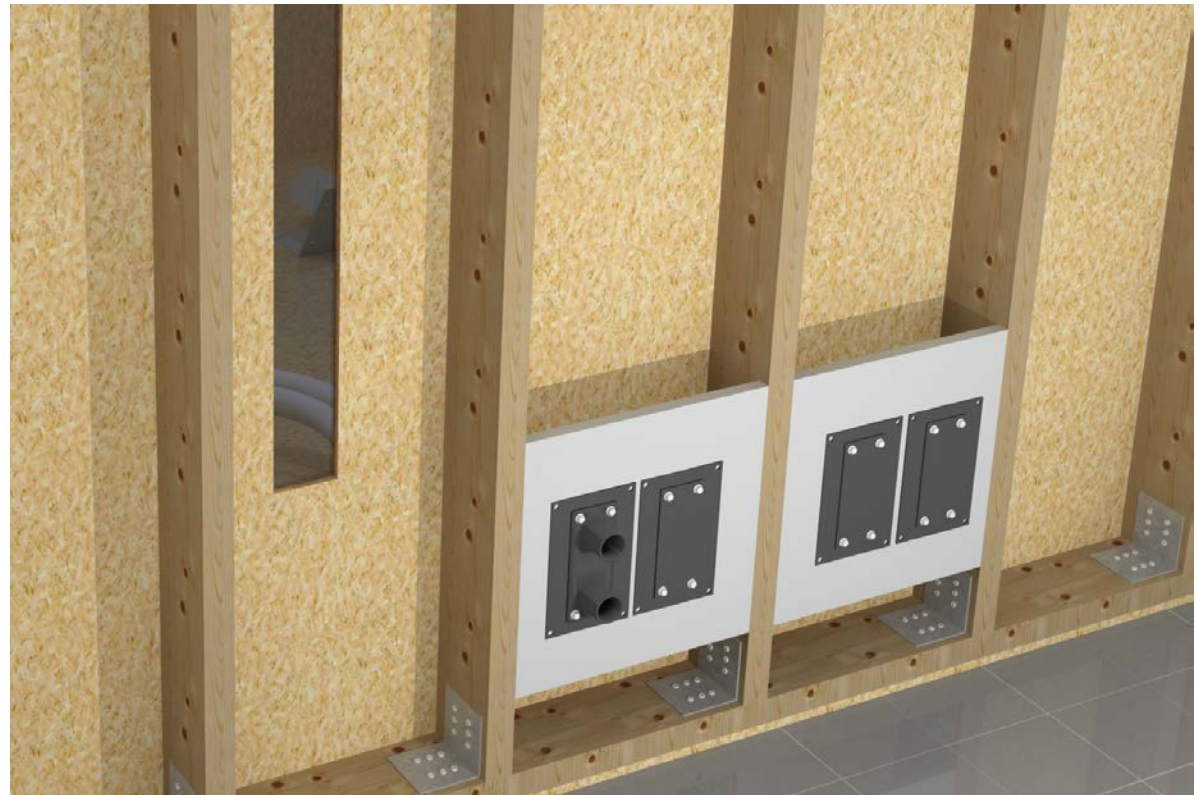
1. FLAT BOTTOM WOOD FRAME STORAGE ROOM.



1. FLAT BOTTOM WOOD FRAME STORAGE ROOM.

DESCRIPTION OF STORAGE

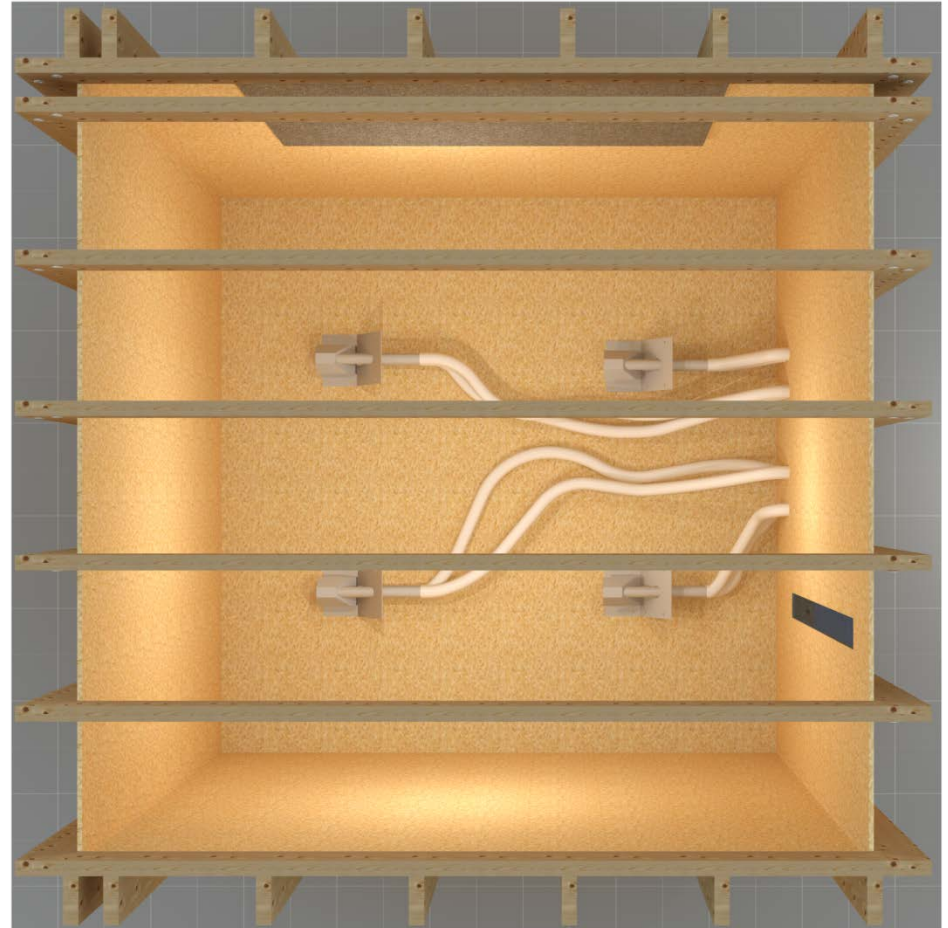
- If a inspection glass is used real glass (not plexi) is preferred to avoid building static electricity.
- The thickness of glass is dependedent of window size, ask a professional glazier.
- Amount of switch over plates is dependent of amount of suction nozzles.



1. FLAT BOTTOM WOOD FRAME STORAGE ROOM.

DESCRIPTION OF STORAGE

- The suction nozzles is recommend to be placed maximum 600mm from wall.
- The recommended distance between the nozzles is 1200mm.
- Use the amount of nozzles appropriate for the storage size.



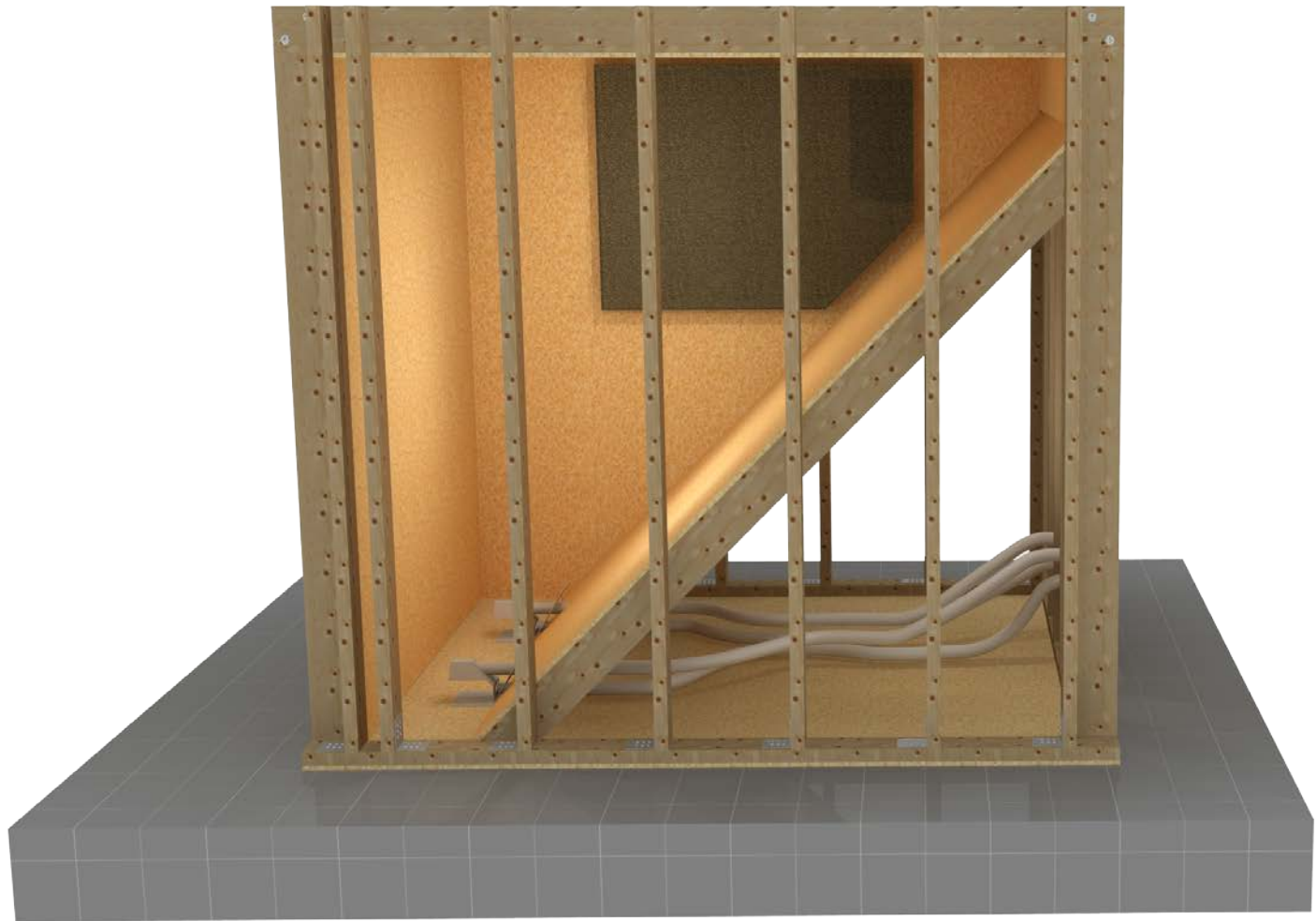
2. INCLINE WOOD FRAME STORAGE ROOM.

DESCRIPTION OF STORAGE

- Bespoke wood frame storage with incline. Incline must be 45° or more.
- Use less suction intakes since the pellets is falling from an incline.
- Recommended frame construction is 145mm x 45mm beams.
- Recommended c/c is 450mm.
- Recommended board materials can be OSB, plywood or hard board.
- A service access placed high preferably close to the filling nozzles. Door opening inwards!
- Discuss appropriate coupling for filling with a pellet supplier in your market.
- A dampening mat is always recommended on the opposed filling side of the storage.



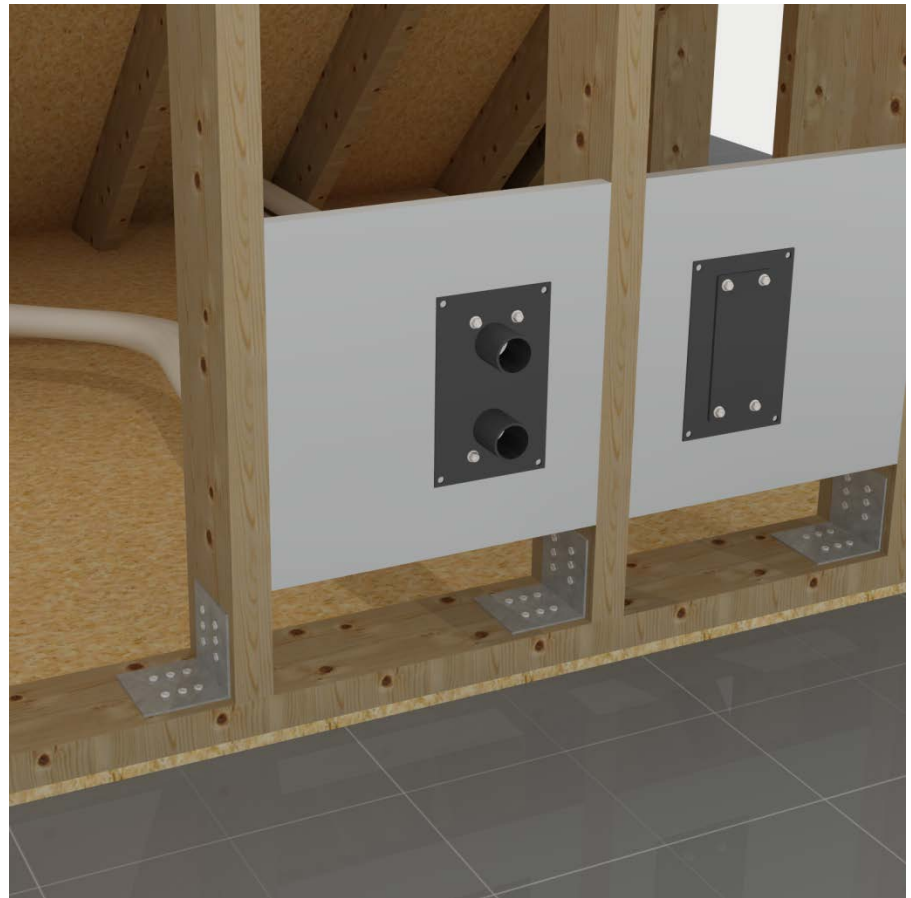
2. INCLINE WOOD FRAME STORAGE ROOM.



2. INCLINE WOOD FRAME STORAGE ROOM.

DESCRIPTION OF STORAGE

- If a inspection glass is used real glass (not plexi) is preferred to avoid building static electricity.
- The thickness of glass is depended of window size, ask a professional glazier.
- Amount of switch over plates is dependent of amount of suction nozzles.



2. INCLINE WOOD FRAME STORAGE ROOM.

DESCRIPTION OF STORAGE

- The suction nozzles is recommend to be placed maximum 600mm from wall.
- The recommended distance between the nozzles is 1200mm.
- Use the amount of nozzles appropriate for the storage size.
- The flat bottom part below the incline can be anywhere between 300-500mm.

